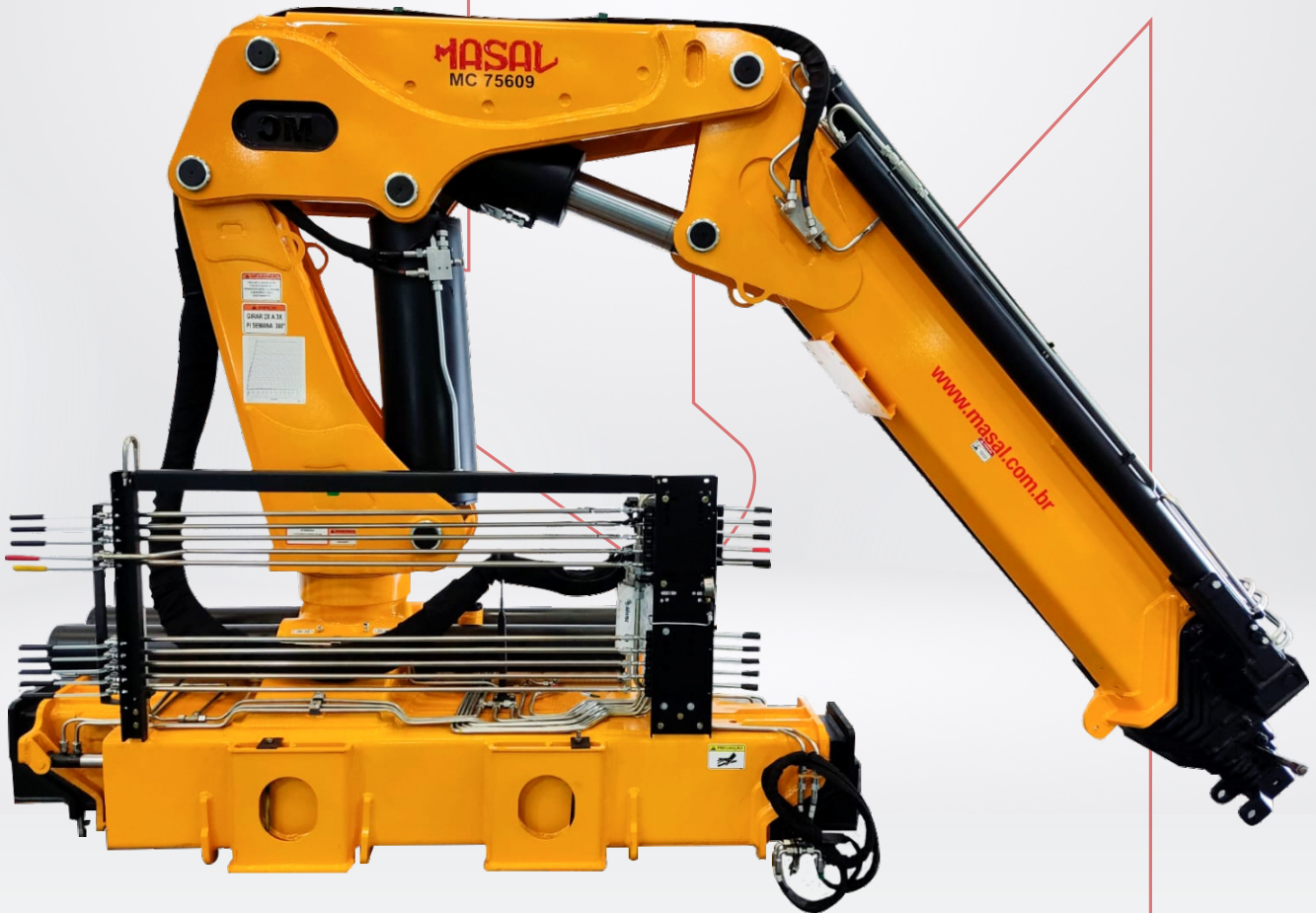


Crane MC 75609



**MAXIMUM HORIZONTAL
OUTREACH**
21,74 m



**MAXIMUM VERTICAL OUTREACH
FROM THE GROUND**
25,16 m



**SLEWING
ANGLE**
360°

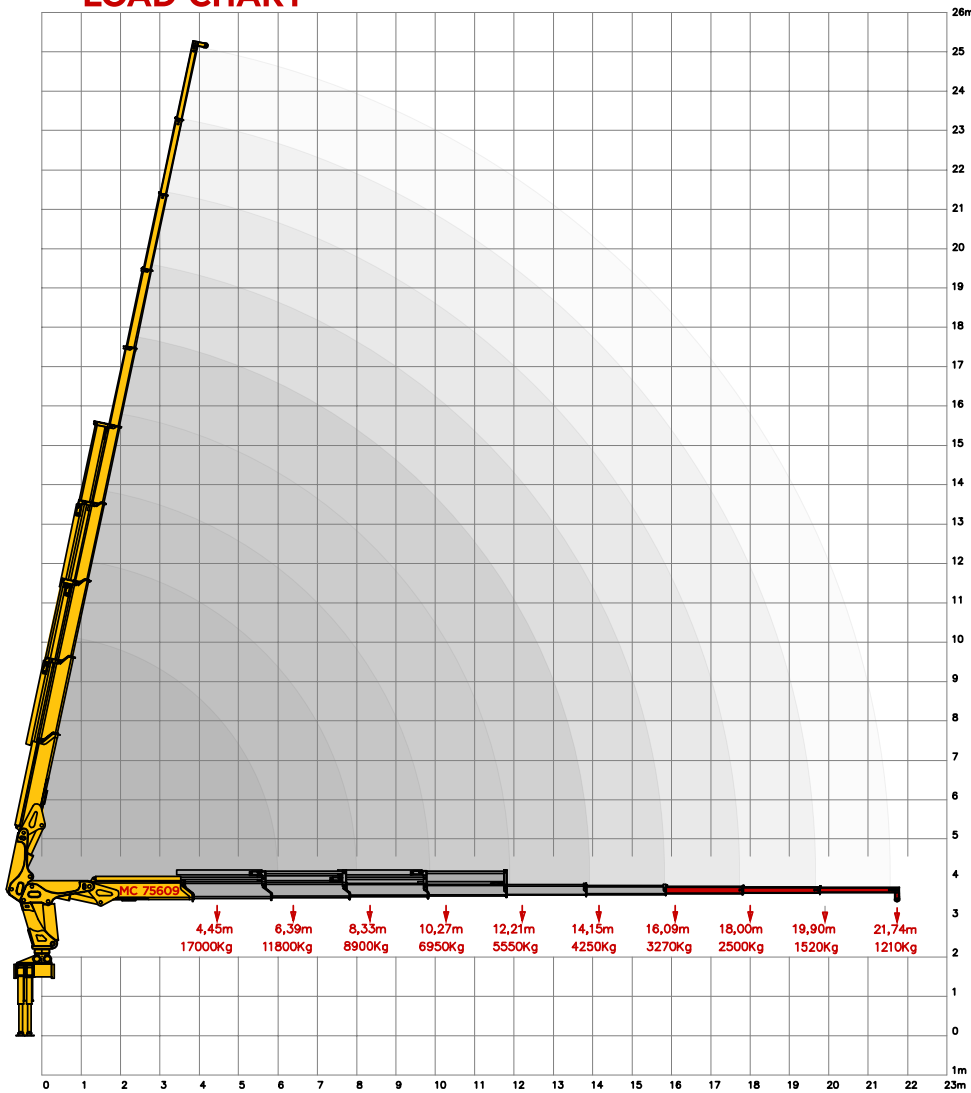
Specifications - MC 75609

**MAXIMUM EXTENT
CAPACITY**
21,74 m

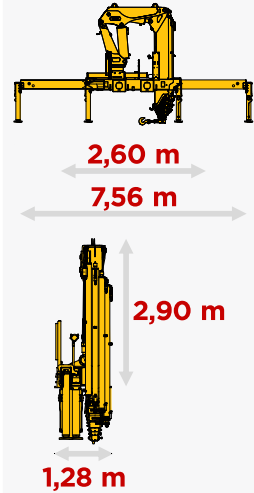


MASAL

LOAD CHART



DIMENSIONS



CHECK OUR WEBSITE



TECHNICAL SPECIFICATIONS

		MC 75609
1. Lifting moment capacity	kgf/m	75600
2. Maximum operating pressure	bar	240
3. Hydraulic reservoir capacity	L	220
4. Equipment weight	kg	6500
5. Number of hydraulic extensions		6
6. Quantity of manual extensions		3
7. Maximum capacity at maximum outreach	kg	1210
8. Maximum capacity at first handle	kg	17000
9. Maximum horizontal outreach	m	21,74
10. Maximum horizontal hydraulic outreach	m	16,09
11. Maximum vertical outreach	m	25,16
12. Maximum vertical hydraulic outreach	m	19,67
13. Width in folded position	m	2,60
14. Width stabilizer spread	m	7,88
15. Maximum opening angle	graus	78
16. Slewing angle	graus	360
17. Minimum lifting radius	m	1,70
18. Installation space needed	m	1,48
19. Slewing torque	kgf/m	10934
20. Dead weight	ton	27

AVAILABLE COLORS

PATTERN

OPTIONS



KNOW OUR PRODUCTS LINES



OUR STRENGTH IS TRADITION

MASAL INDUSTRY

Headquarters - Rua Alfredo Caetano,
O2 Santo Antônio da Patrulha
Rio Grande do Sul / Brazil

(51) 3662-3066
www.masal.com.br

MASAL