

Crane MC 10605



MAXIMUM HORIZONTAL
OUTREACH
12,00 m



MAXIMUM VERTICAL OUTREACH
FROM THE GROUND
15,20 m



SLEWING
ANGLE
410°

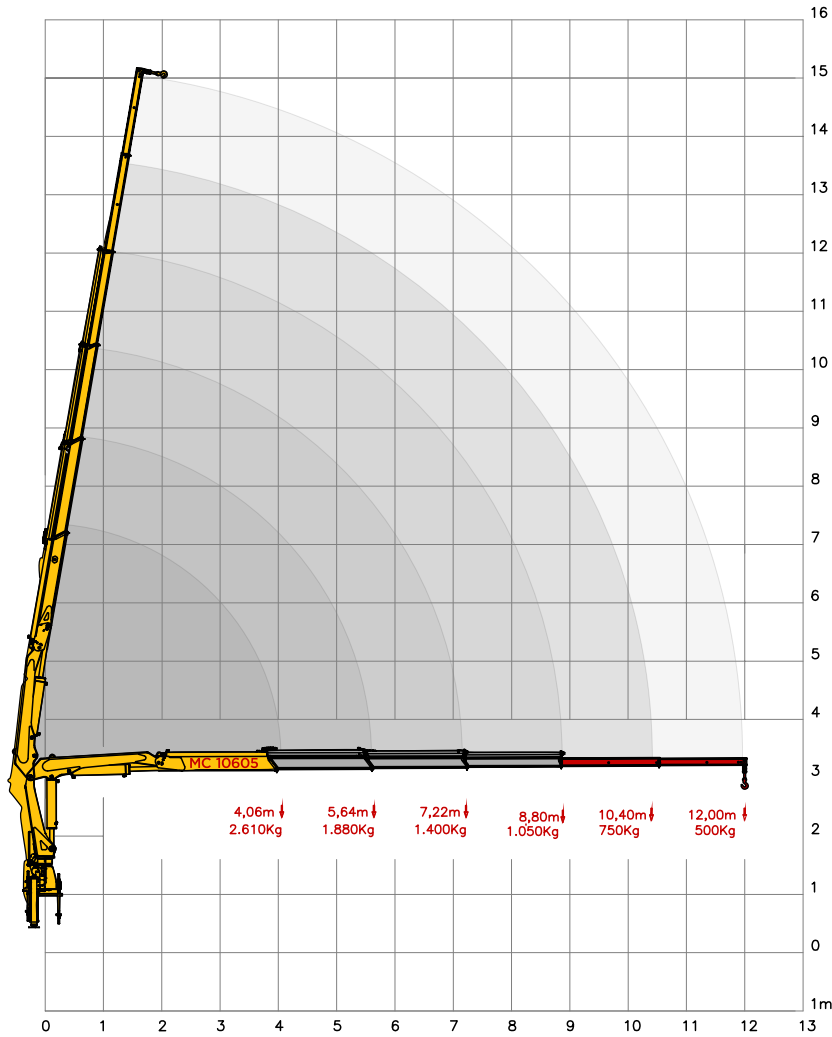
Specifications - MC 10605

MAXIMUM EXTENT
CAPACITY
12,00 m

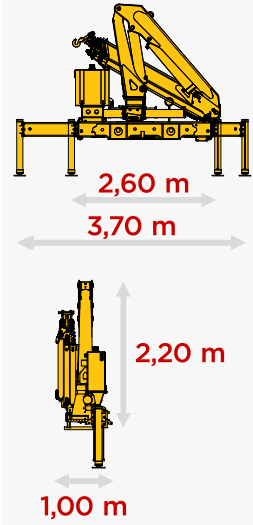


MASAL

LOAD CHART



DIMENSIONS



CHECK OUR WEBSITE



TECHNICAL SPECIFICATIONS

MC
10605

1. Lifting moment capacity	kgf/m	10000
2. Maximum operating pressure	bar	230
3. Hydraulic reservoir capacity	L	80
4. Equipment weight	kg	1500
5. Number of hydraulic extensions		3
6. Quantity of manual extensions		2
7. Maximum capacity at maximum outreach	kg	500
8. Maximum capacity at first handle	kg	2610
9. Maximum horizontal outreach	m	12,00
10. Maximum horizontal hydraulic outreach	m	8,80
11. Maximum vertical outreach	m	15,20
12. Maximum vertical hydraulic outreach	m	11,90
13. Width in folded position	m	2,60
14. Width stabilizer spread	m	3,70
15. Maximum opening angle	graus	80
16. Slewing angle	graus	410
17. Minimum lifting radius	m	1,00
18. Installation space needed	m	1,20
19. Slewing torque	kgf/m	2062
20. Dead weight	ton	9

AVAILABLE COLORS

PATTERN

OPTIONS



KNOW OUR PRODUCTS LINES



OUR STRENGTH IS TRADITION

MASAL INDUSTRY

Headquarters - Rua Alfredo Caetano,
02 Santo Antônio da Patrulha
Rio Grande do Sul / Brazil

(51) 3662-3066
www.masal.com.br

MASAL