

# Crane

## MC 60609-S



**MAXIMUM HORIZONTAL  
OUTREACH**  
**22,07 m**



**MAXIMUM VERTICAL OUTREACH  
FROM THE GROUND**  
**25,00 m**



**SLEWING  
ANGLE**  
**360°**

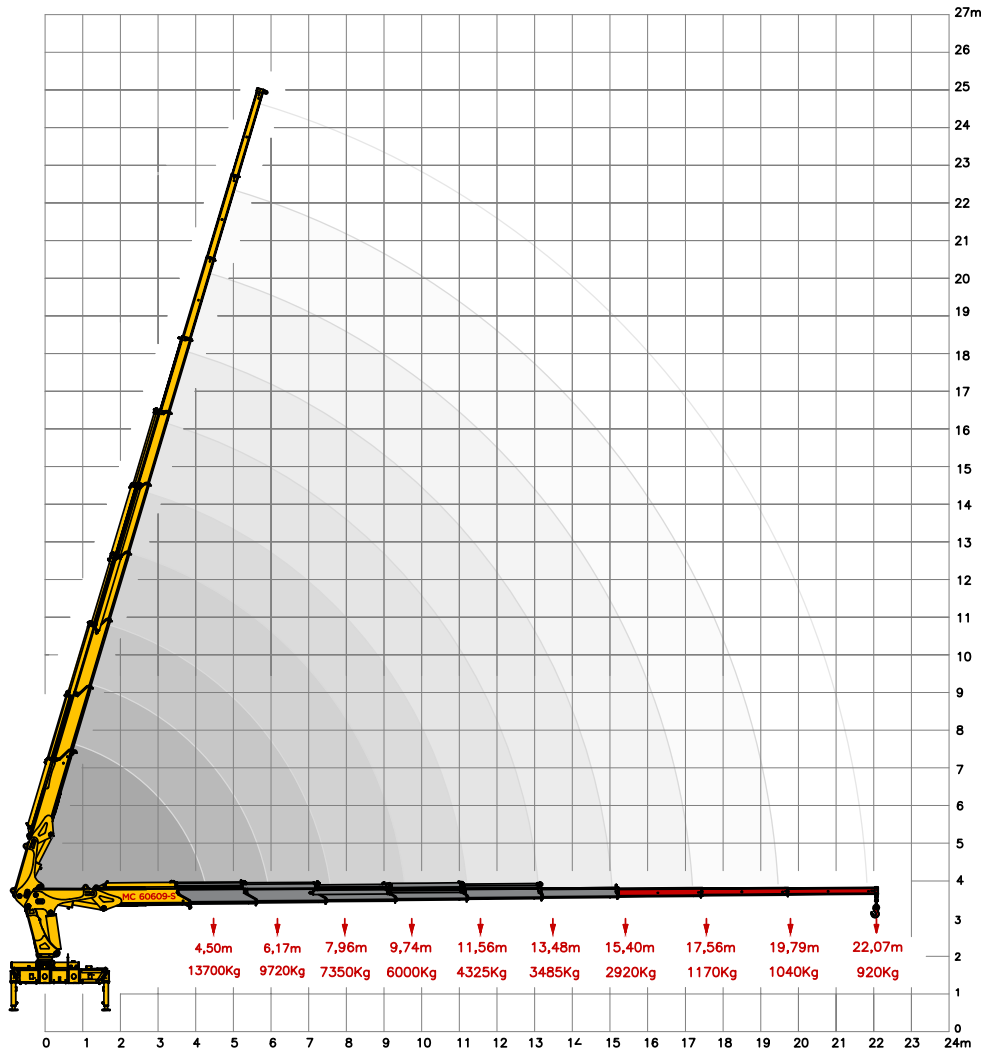
Specifications - MC 60609-S

**MAXIMUM EXTENT  
CAPACITY**  
**22,07 m**

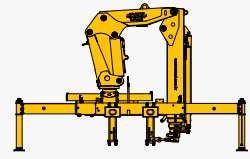


# MASAL

## LOAD CHART

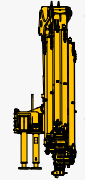


## DIMENSIONS



2,60 m

7,88 m



2,90 m

1,25 m

## CHECK OUR WEBSITE



## TECHNICAL SPECIFICATIONS

**MC**  
**60609-S**

1. Lifting moment capacity	kgf/m	60600
2. Maximum operating pressure	bar	240
3. Hydraulic reservoir capacity	L	155
4. Equipment weight	kg	5400
5. Number of hydraulic extensions		6
6. Quantity of manual extensions		3
7. Maximum capacity at maximum outreach	kg	920
8. Maximum capacity at first handle	kg	13700
9. Maximum horizontal outreach	m	22,07
10. Maximum horizontal hydraulic outreach	m	15,40
11. Maximum vertical outreach	m	25,00
12. Maximum vertical hydraulic outreach	m	18,57
13. Width in folded position	m	2,60
14. Width stabilizer spread	m	7,88
15. Maximum opening angle	graus	78
16. Slewing angle	graus	360
17. Minimum lifting radius	m	1,90
18. Installation space needed	m	1,40
19. Slewing torque	kgf/m	7087
20. Dead weight	ton	23

## AVAILABLE COLORS

PATTERN

OPTIONS



## KNOW OUR PRODUCTS LINES



OUR STRENGTH IS TRADITION

## MASAL INDUSTRY

Headquarters - Rua Alfredo Caetano,  
02 Santo Antônio da Patrulha  
Rio Grande do Sul / Brazil

(51) 3662-3066  
www.masal.com.br

# MASAL